

[Home](#)

[Tools & Calculators](#)

[Tutorials & Training](#)

[Reference](#)

[Categories](#)

[Archive](#)

Apr 28, 2009

DIN 6885-3 :- Key, Hub Keyway, Shaft Keyway Details and Dimensions

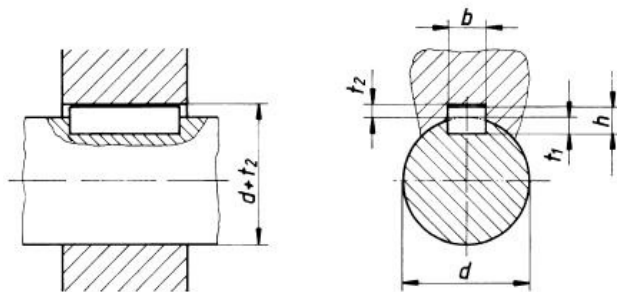
Sign up for our email newsletter

✉ Enter your email address Sign Up



DIN 6885/3 :- Definition

Drive Type Fastenings without Taper Action; Parallel Keys, Shallow Pattern, Dimensions and Application



[Cool Stuff](#)



[Engineering Knowledge Base](#)



[Technology Beats](#)

d (from) mm	d (to) mm	bxh	t1	t2
12	17	5x3	1.9	1.2
17	22	6x4	2.5	1.6
22	30	8x5	3.1	2
30	38	10x6	3.7	2.4
38	44	12x6	3.9	2.2
44	50	14x6	4	2.1
50	58	16x7	4.7	2.4
58	65	18x7	4.8	2.3
65	75	20x8	5.4	2.7
75	85	22x9	6	3.1
85	95	25x9	6.2	2.9
95	110	28x10	6.9	3.2
110	130	32x11	7.6	3.5
130	150	36x12	8.3	3.8

RECENT ARTICLES

1. Material Properties of S355 Steel - An Overview
2. 1.4301 Stainless Steel - An Overview
3. Solving Heidi Module Load Error on DWG True View
4. Improve Circular Edge Display Quality on ProE/Creo
5. Preselection Highlighting on Pro/Engineer (Creo) Not Working [Solved]
6. How to Use Align/Mate Angle Offset Feature in Pro/Engineer (Creo)?
7. Duplex Bearing Arrangements - Back to Back, Face to Face and Tandem
8. Process of Steel Making Video from Start to Finish
9. Comparison of Gear Efficiencies - Spur, Helical, Bevel, Worm, Hypoid, Cycloid
10. Press Fit Pressure Calculator – Optimize Your Interference/Transition Fit Design

—